

Simology™

Critical Moulage Kits

**Complex Clinical Moulage
Range Brochure**

MDT Global Solutions Ltd. now offers pre-made flat mould wounds to purchase to enhance your training experience. Pre-made wounds take minutes to apply and create hyper-realistic simulation. They are designed for single application, but can remain on the manikin for several training evolutions

Wounds are soft and lifelike made of encapsulated silicone, which has been softened with deadener to produce a lifelike skin feeling.

Wounds are available in one of four skin tones:



Dark

Warm

Medium

Pale

In addition to the skin tone, all wounds contain flocking to enhance a lifelike skin appearance.



and are supplied with the wound interiors painted



Application Kit: SW-AK1

All the items that you need to apply around 50 wound pieces that are ordered with correct skin tone for use. Note- will require local purchase of acetone in addition to the kit contents.

Contents:

- ◆ 2oz Silicone Glue and 2oz Thinners
- ◆ 250ml Glue Remover
- ◆ 500g Arterial Blood
- ◆ 2 x metal reusable shot glasses
- ◆ 5 detail brushes
- ◆ 1 Application Tool
- ◆ Cotton buds



Bruising Application Kit:SW-BK1

All the items that you need to apply multiple bruises and traumatic skin tone effects. Local purchased IPA Alcohol will need to be added to the activator spray

Contents:

- ◆ Alcohol Colour Palette
- ◆ Alcohol Palette activator spray(empty)
- ◆ Professional Stipple brush



*examples of effects created:



Skin Tone Blending Kit: SW-STK1

All the items that you need to perfectly match the skin tone of the wound to the manikin for TV / Film level effects. Local purchased IPA Alcohol will need to be added to the activator spray



Contents:

- ◆ Alcohol Colour Palette
- ◆ Alcohol Palette activator spray(empty)
- ◆ Professional Stipple brush

*images for illustration purposes

Blood lines: SW-BL1

Soft, flexible quality silicone pipe that can be used under certain flat moulds to produce actively bleeding wounds



Contents:

- ◆ 1m Reusable Silicone Pipe
- ◆ Luer-lock tubing connector
- ◆ 50ml Luer-lock syringe

*images for illustration purposes

Master Burns Application Kit: SW-MBK1

All the items that you need to perfectly create multiple effective burns on manikins or actors. Professional, easy to clean off products.



Contents:

- ◆ Black and Brown Sprays
- ◆ Tissue loss Fluid
- ◆ Charred effect paste

*images for illustration purposes



*examples of effects created:



Silicone Safe Fake Glass: SW-FG1

Soft, flexible quality silicone glass that looks exactly like broken glass but can be placed safely in any Simology wound to create stunning effects.



Contents:

- ◆ 50g Bag of Reusable Silicone Glass

*images for illustration purposes

Master Effects Application Kit: SW-MEK1

All the items that you need to perfectly create multiple different effects to add additional stunning realism to your actor or manikin simulations.

Contents:



- ◆ 30g Pot of fake Phlegm
- ◆ 30g Pot of fake Pus
- ◆ 30g Pot of fake Tar / Heavy Oil
- ◆ 30g Pot of fake Dirt
- ◆ 30g Pot of fake Grease
- ◆ 30g Pot of Clotted blood

*images for illustration purposes



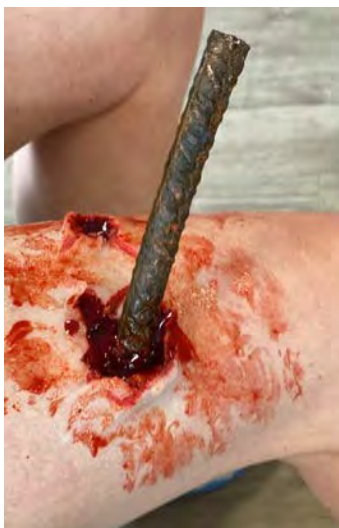
Fake Impaled Metal Bar: SW-MB4

Soft, flexible quality set of 4 fake metal bars that look exactly like the real thing but can be placed safely in any wound to create stunning effects



Contents :

- ◆ 2 Reusable textured rebars
- ◆ 2 Reusable rusty metal rods



Here combined with SW7 to create a perfect impaled effect.

*images for illustration purposes

Safe Fake Knife set: SW-FK1

Soft fake handle, accurately coloured akin to a film prop. Supplied with a fake blade and also an impaled blade to be used with any appropriate simwound.



Contents:

- ◆ Painted handle
- ◆ Painted full safe blade
- ◆ Painted impaled blade

*images for illustration purposes



Here combined with SW32 to create a perfect Stabbed effect.

Amputated Finger set: SW-AF2

Soft, flexible quality set of 2 fake amputated fingers that look exactly like the real thing to create stunning effects.



*images for illustration purposes

Contents :

- ◆ 1 long finger
- ◆ 1 finger tip



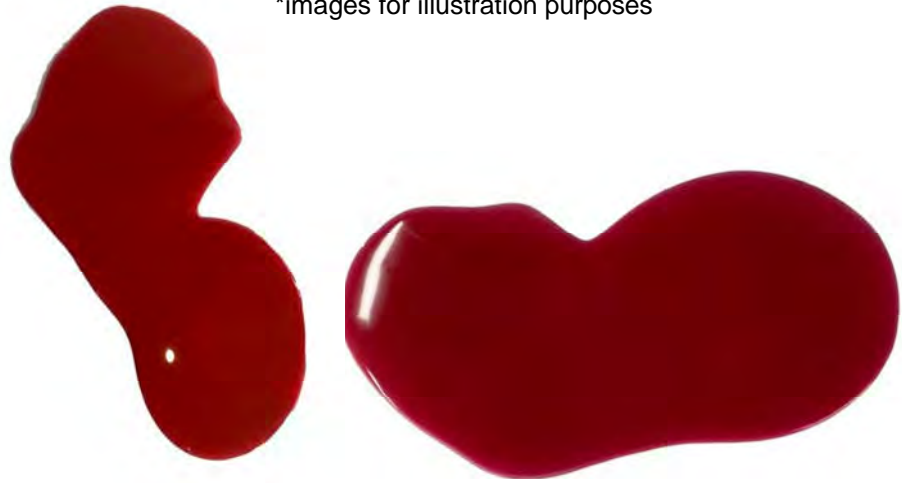
Silicone Re-usable Blood Pools: SW-BP1

Soft, flexible quality silicone blood pool that looks exactly like the real thing but can be placed safely on any surface to create stunning effects, and simply peeled off when finished, stored and re-used. Supplied as a pack of two as follows;



- ◆ Reusable Blood Pool Small (20cmx10cm approx)
- ◆ Reusable Blood Pool Large (30cm x 15cm approx)

*images for illustration purposes



Silicone Re-usable Fake Vomit: SW-FV1

Soft, flexible quality silicone vomit that looks exactly like the real thing but can be placed safely on any surface to create stunning effects, and simply peeled off when finished, stored and re-used. Variety of shades available. Supplied as a pack of two as follows;



- ◆ Reusable Silicone Vomit Small (20cmx10cm approx)
- ◆ Reusable Silicone Vomit Large (30cm x 15cm approx)

*images for illustration purposes

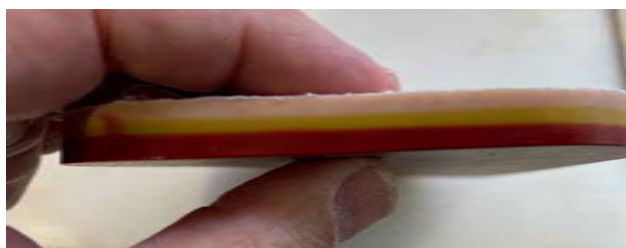
Silicone Re-usable Suture Pad: SW-SP 1 / 2

Soft, flexible quality silicone suture pad comprising 3 mesh reinforced layers of muscle, fat and skin. Can be re-sutured multiple occasions. Perfect tool for suture practice. Left blank for you to create the wounds you need to suture.



◆ Suture Pad: SW-SP1
(15cm x 11cm approx.)

◆ Suture Pad: SW-SP2
(23cm x 15cm approx.)



Simple Application Guide

If you are new to encapsulated silicone flat moulds here is a simple guide to application using the items from our application kit above:



Prior to any application clean the manikin skin if dirty. Use IPA Alcohol for this.

Place flat mould piece in the desired location and mark edges of the piece so that the size is identifiable when the piece is removed.



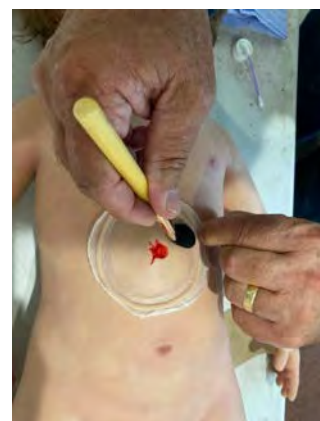
Do not use too much acetone and stay to the edge of the piece. Once the flashing is removed, revisit the edge if required with a little more acetone on a brush to produce finished smooth edges. **DO NOT** use excessive amounts of acetone on the manikin skin.



Now apply glue to the manikin skin and the piece using a cotton bud. For easier application mix glue:thinners 1:1 in one of the shot glasses. Allow the glue to dry. A hand fan can be used to speed up this process if required. Larger pieces may need to be glued in stages.



Applied piece should then have fine edges. If there are tacky areas of glue use a small amount of talc to dry the area. Advanced users may now further blend the piece to the skin by using fine washes from an alcohol palette to improve on the skin tone of the piece if required, using the skin tone application blending kit.



Once the glue is dry apply the piece. Start with pressure in the middle and stretch it out gently towards the edges so that there are no creases in the piece. Once you are satisfied with location apply pressure to glue down. Use the application tool to assist with this.



Finish the effect by using blood as required on the piece. If the blood beads over the piece, try using a little washing up liquid mixed into your blood to stop this occurring and improve on the final look of the finished application.



Once the piece is glued down use some acetone in the metal shot glass on one of the brushes to dissolve the edges of the piece next to the silicone flashing ring. Gently smoothing outward will dissolve the encapsulate material and leave a fine edge.

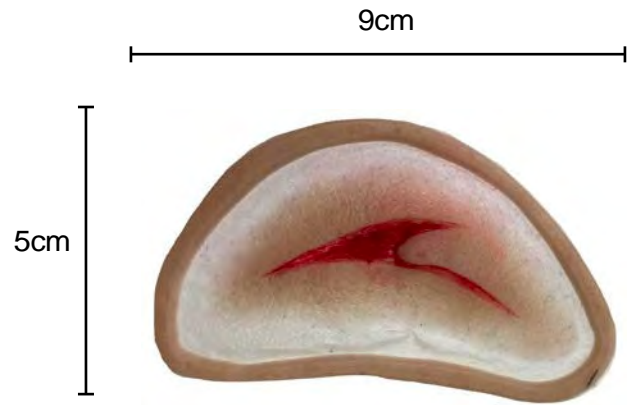


To remove, wipe off any blood effects with a baby wipe. Remove any alcohol palette colours with IPA Alcohol. Then peel off the piece and remove any residual glue on the manikin using the bespoke remover included in the kit. Dry and then finish with a light dusting of talc.

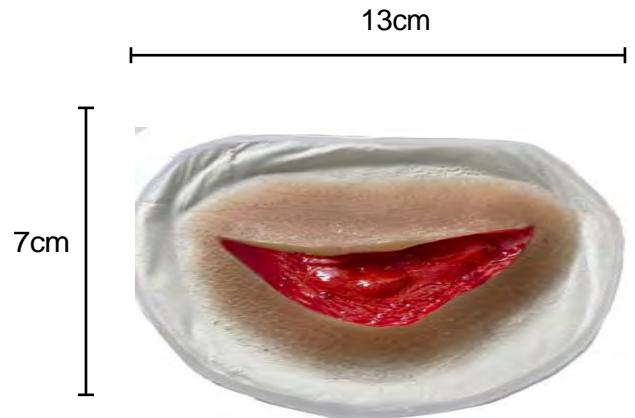
Bladed wounds



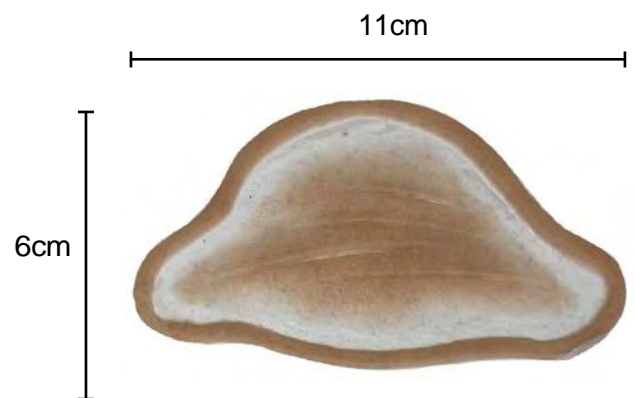
Wound SW1:
1.5 inch wound with skin flap

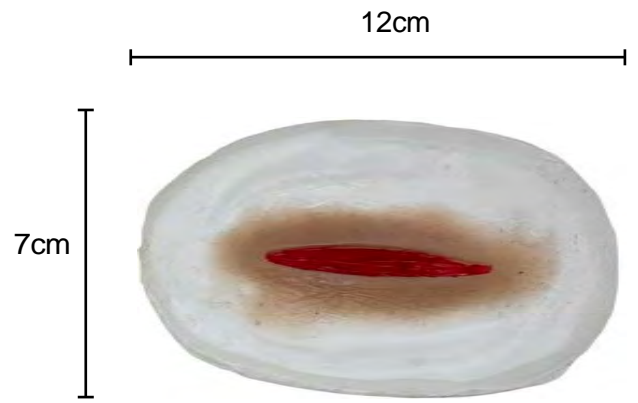


Wound SW2:
3 inch curved laceration with large flap

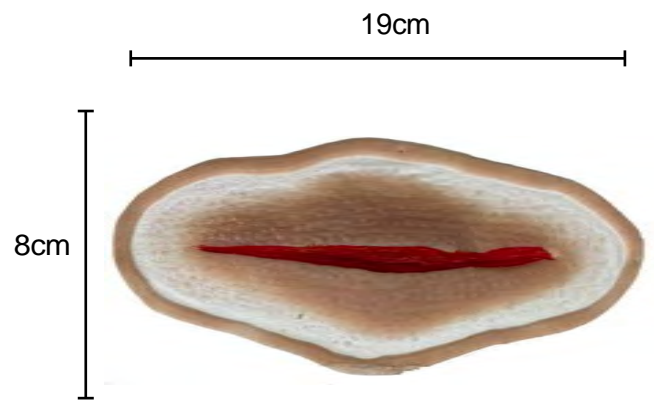


Wound SW3:
2 inch fine-blade deliberate self harm wounds

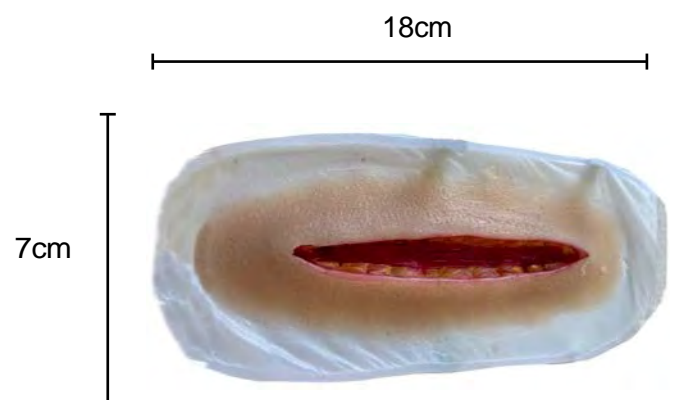




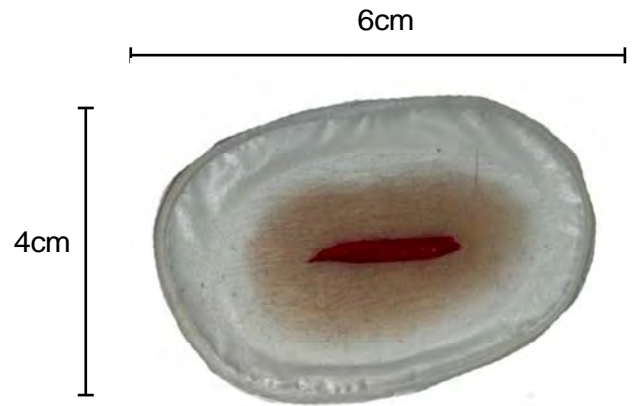
Wound SW4:
Simple 3 inch laceration



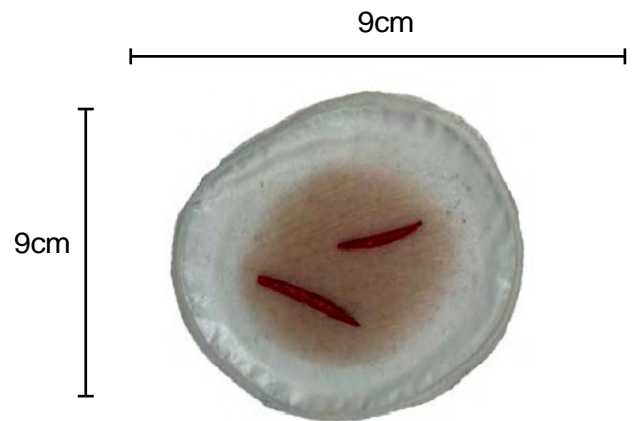
Wound SW5:
Simple 6 inch laceration
Actively bleeds with addition of blood line



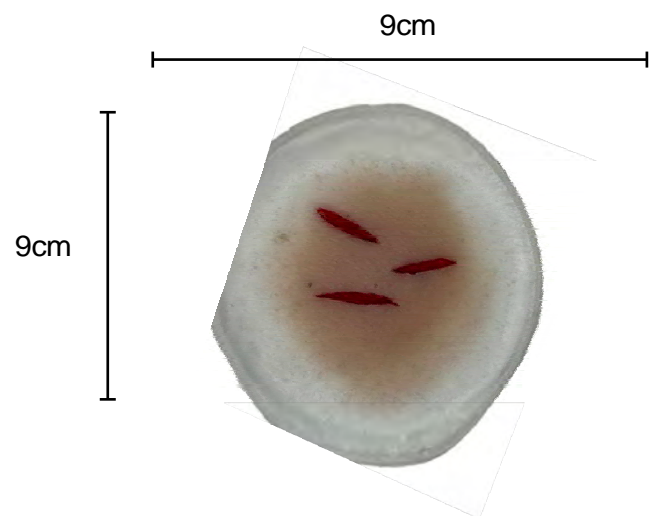
Wound SW6:
Machete wound to limb
Actively bleeds with addition of blood line



Wound SW32:
Single Stab. Works well in conjunction with Fake Knife FK1



Wound SW33:
Double Stab. Works well in conjunction with Fake Knife FK1



Wound SW34:
Triple Stab. Works well in conjunction with Fake Knife FK1

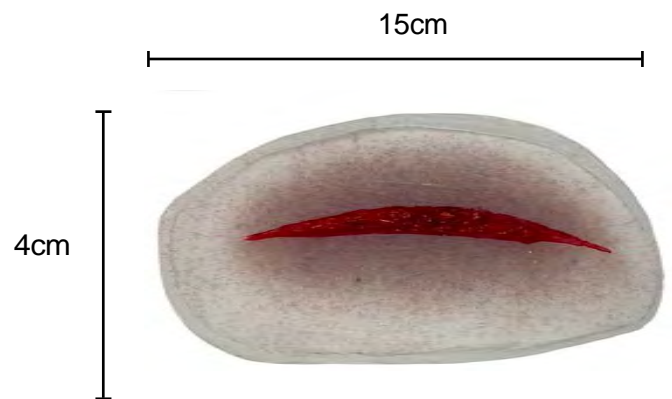


Example Sim:

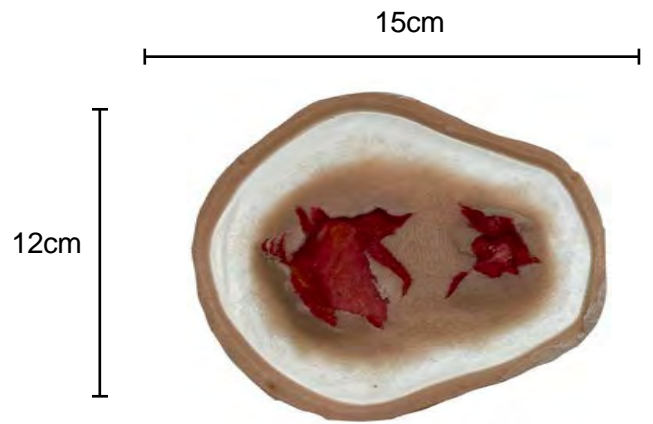
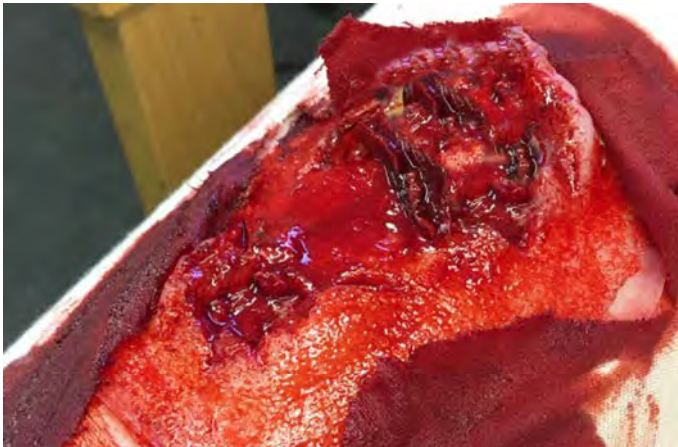
Stab Wounds SW32,33,34 and Fake Knife set FK1 used together to create a realistic stabbing scenario



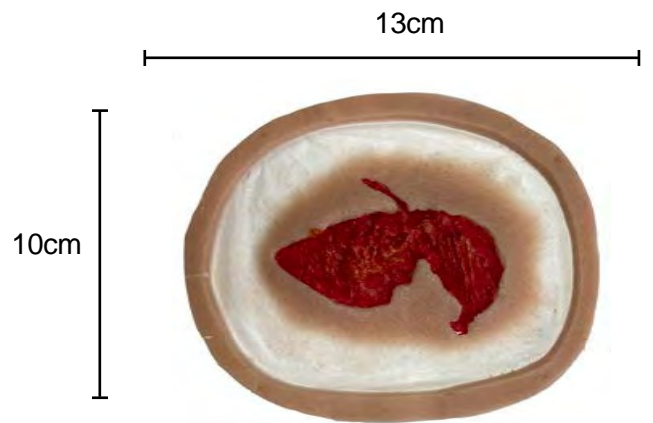
Wound SW25:
4 inch curved incision
Actively bleeds with addition of blood line



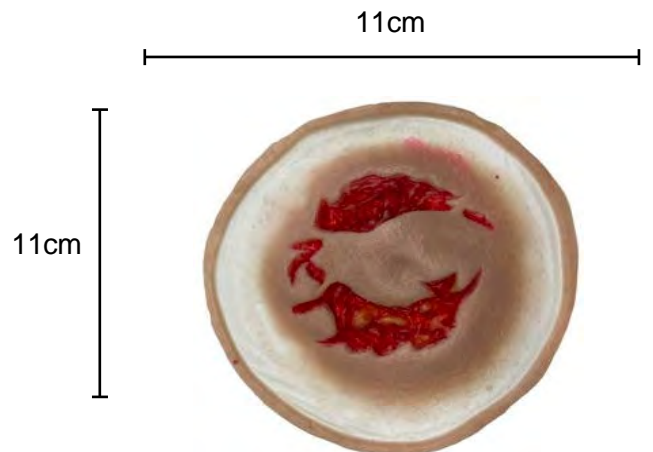
Traumatic Wounds



Wound SW7:
large 5 inch generic tissue wound
Actively bleeds with addition of blood line and works well with SW-MB4



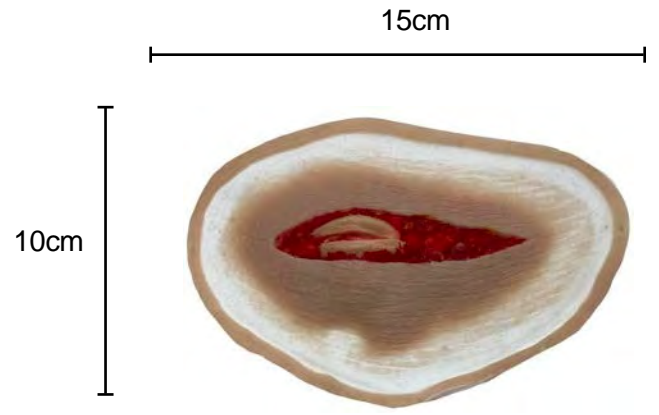
Wound SW8:
3 inch generic tissue wound / Gun shot exit
Actively bleeds with addition of blood line



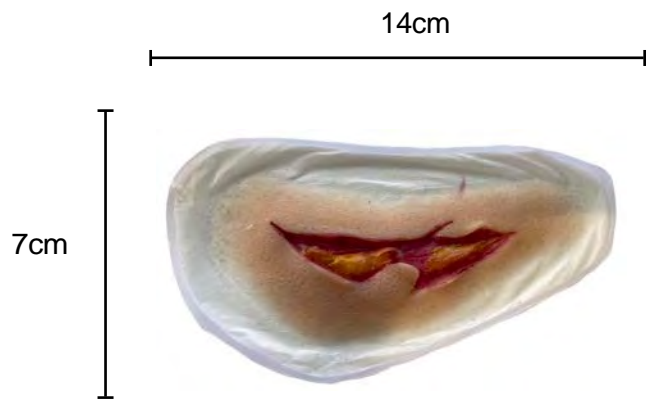
Wound SW9:
Animal bite wound



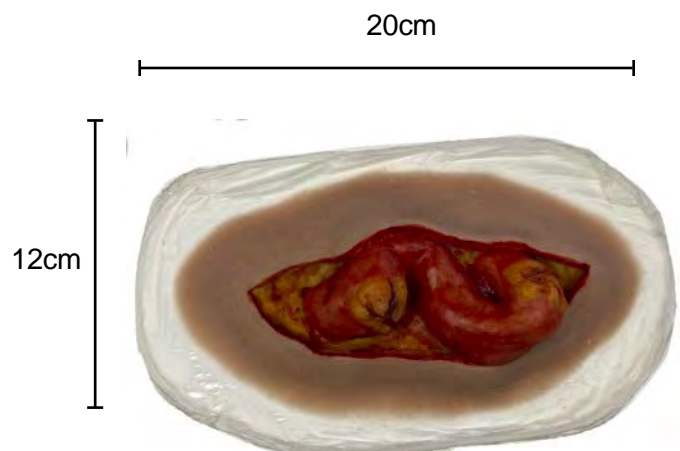
Wound SW10:
Open throat with visible larynx



Wound SW11:
3 inch jagged traumatic wound

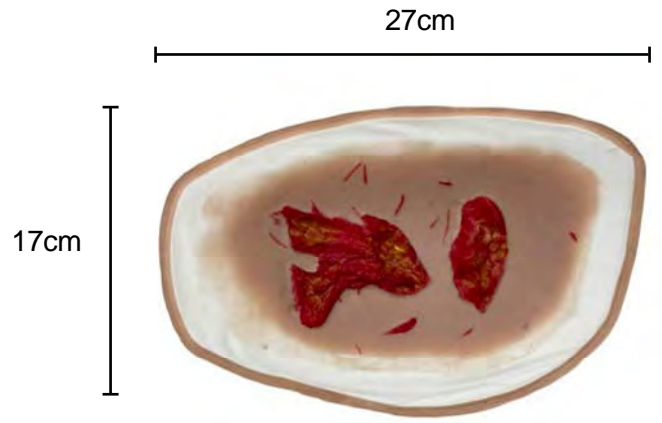


Wound SW12:
Eviscerated Abdomen

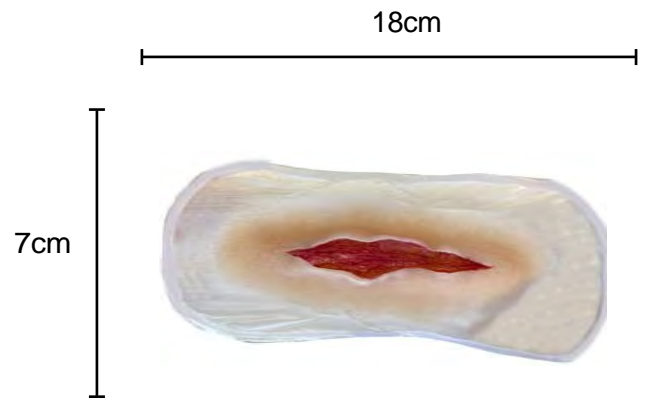




Wound SW13:
12 inch large trauma wound
Actively bleeds with addition of blood line



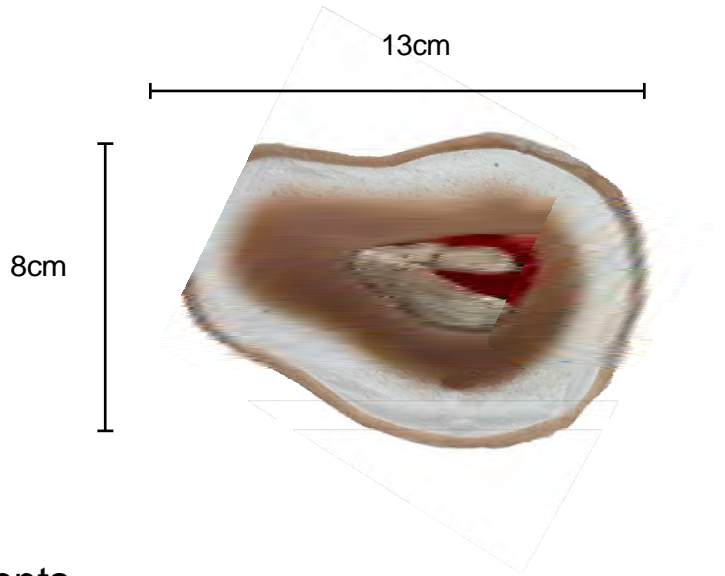
Wound SW24:
Deep Tissue Laceration
Actively bleeds with addition of blood line



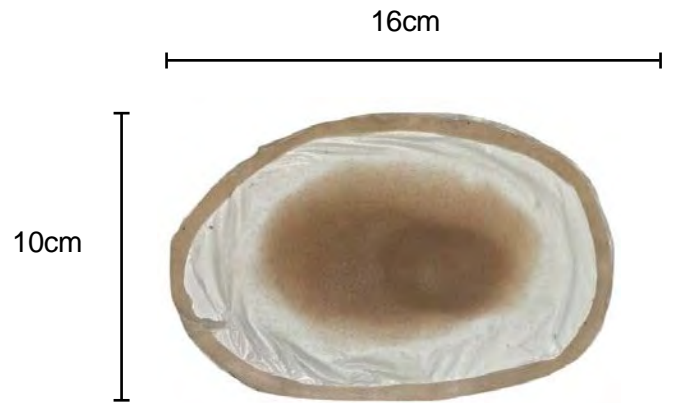
Fractures



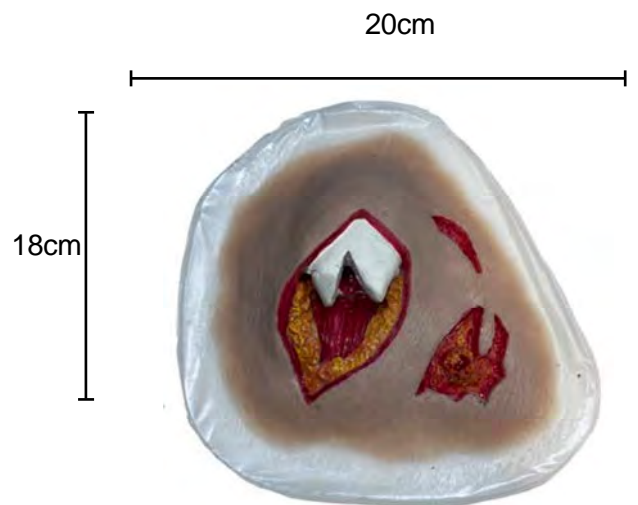
Wound SW15:
3 inch open fracture with bone fragments



Wound SW16:
Closed fracture

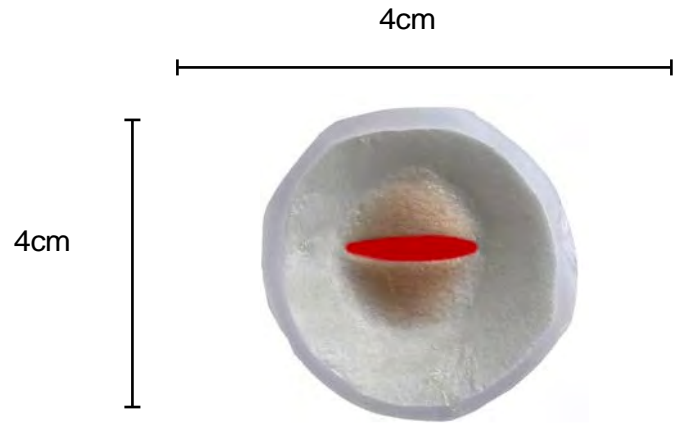


Wound SW26:
Open femur fracture #2
Actively bleeds with addition of blood line





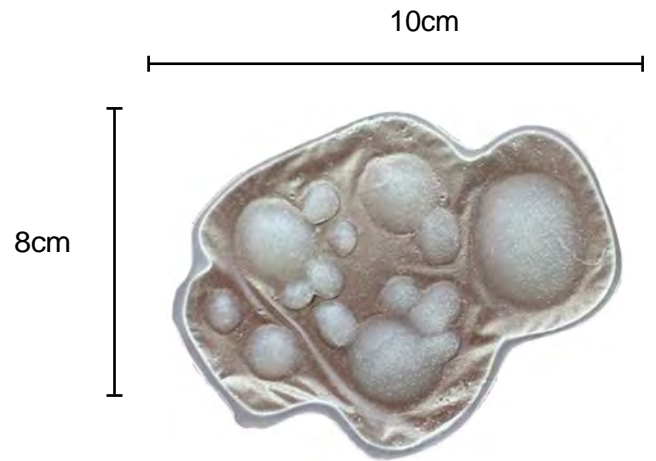
Wound SW27:
Broken Nose



Blisters - Chemical / Scald / CBRN



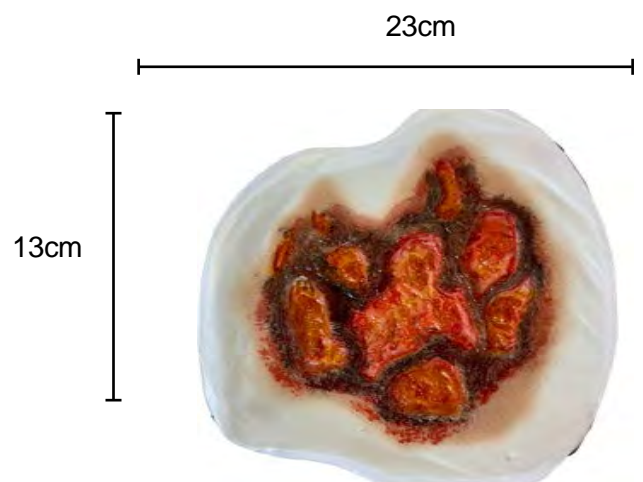
Wound SW35:
Multipurpose Blister wound



Burns - thermal



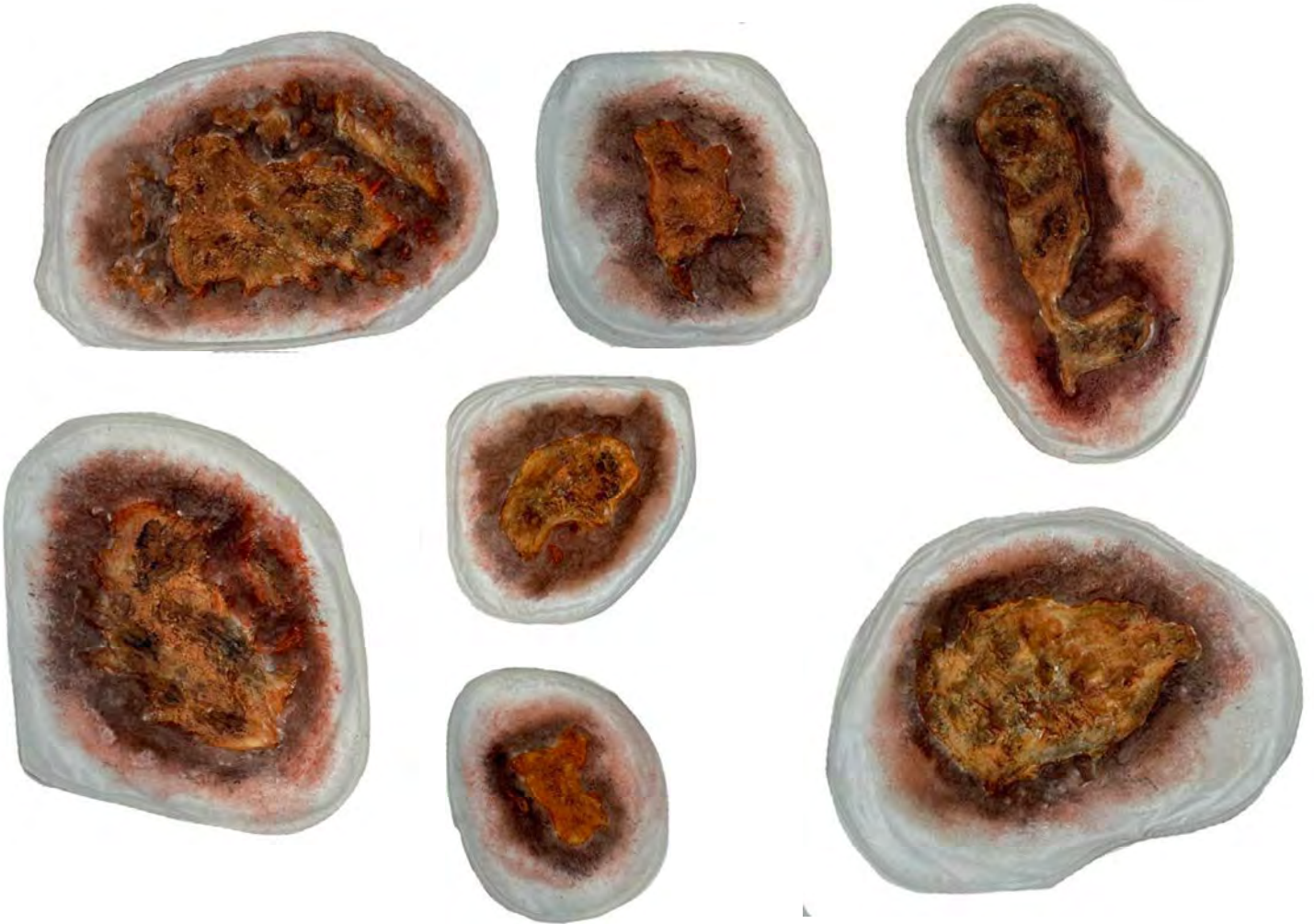
Wound SW17:
Full thickness burn / blast wound



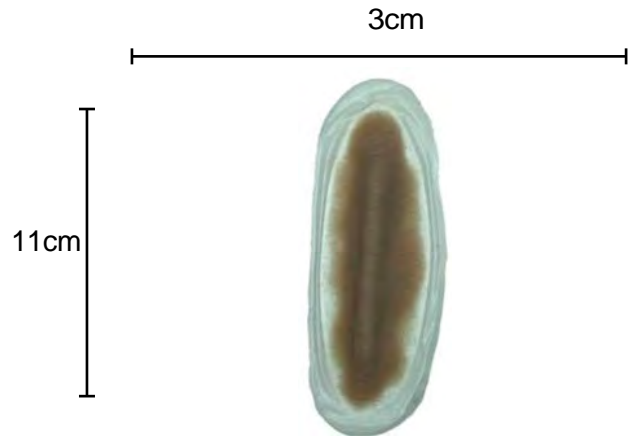
Burns - thermal - set of 7

Wound SW36:

7 burns of differing sizes to create large scale burns effects. Best used in conjunction with Master Burns Application set SW-MBK1 (Note - Set does not include SW17).



Raised JVP

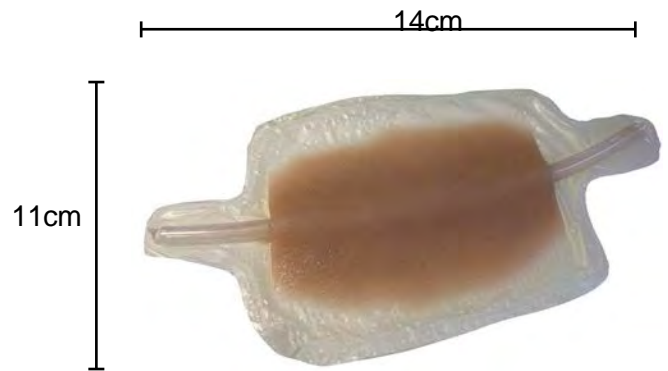


Wound SW23:
Uni-lateral raised JVP piece - can be applied either side

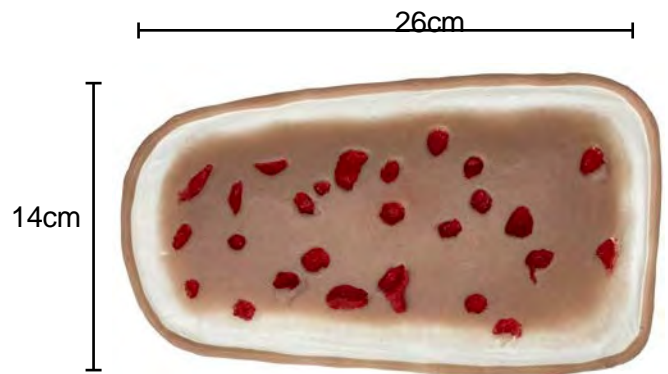
IV Trainer Patch

Wound SW22:
IV trainer Patch

Can be fitted to any part of the manikin and allows for accurate venepuncture training. Supplied with Luer locks at both ends.



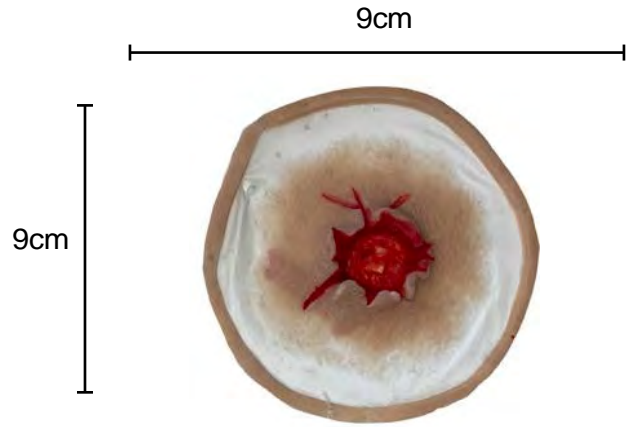
Gun shot and blast wounds



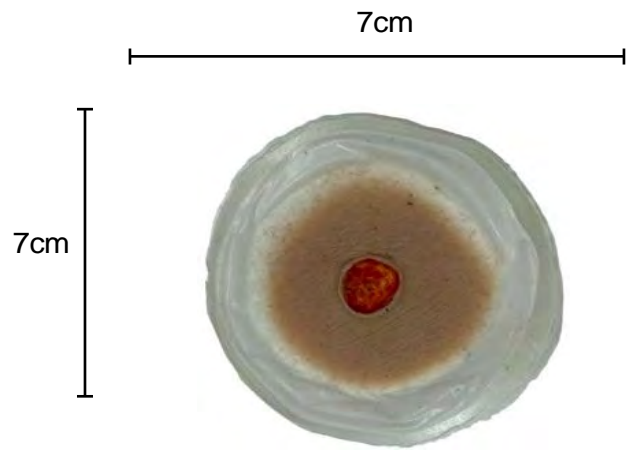
Wound SW18:
Limb shrapnel injuries
Actively bleeds with addition of blood line



Wound SW19:
Raised exit wound



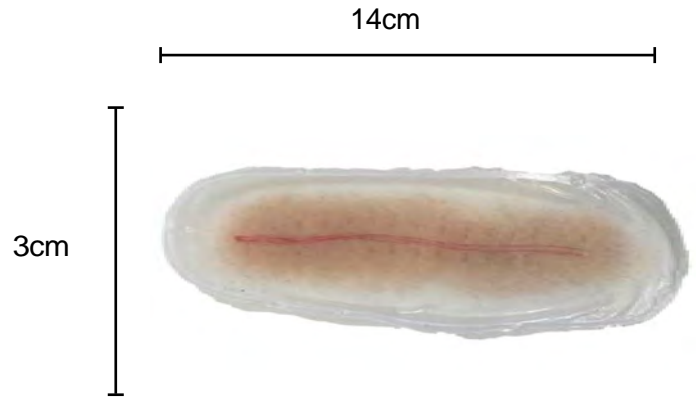
Wound SW20:
Clean small calibre entry wound



Wound SW21:
Clean small calibre exit wound

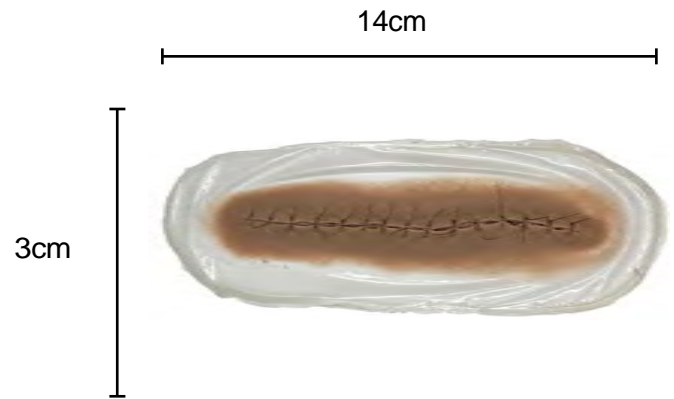


Healed Operation Scar



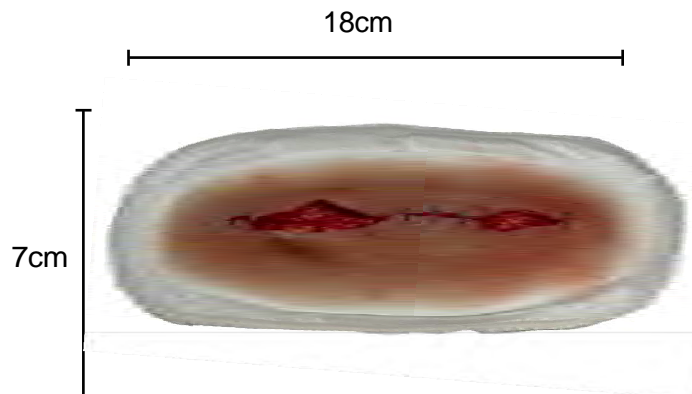
Wound SW29:
Post operation healed scar

Operation Sutured or Stapled Wound



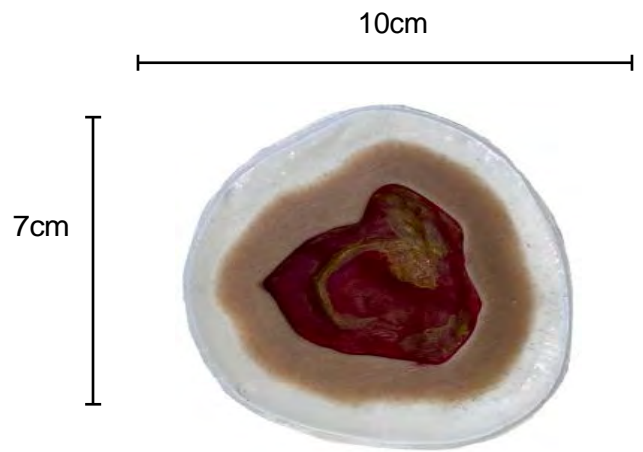
Wound SW30:
Can be supplied native (SW30) or sutured (SW30:1) or stapled (SW30:2)

Burst Surgical Wound



Wound SW37:
Post operation burst infected wound - semi sutured

Pressure Sore



Wound SW28:
Broken down area of skin / pressure sore

Stage 2, 3 and 4 Diabetic Ulcer

Wound SW38:
3 wounds supplied as a set designed to be a progression of each other



Stage 2



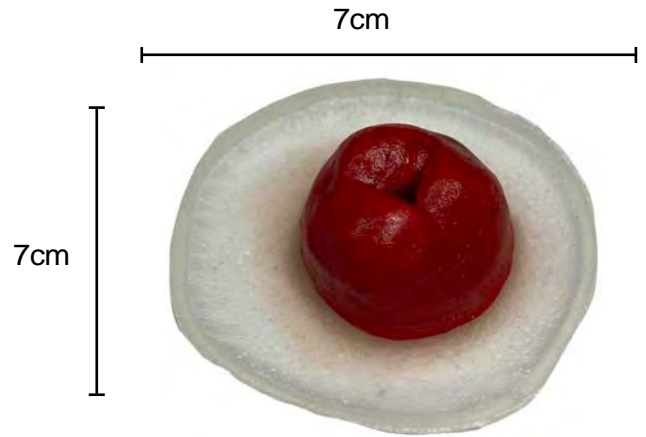
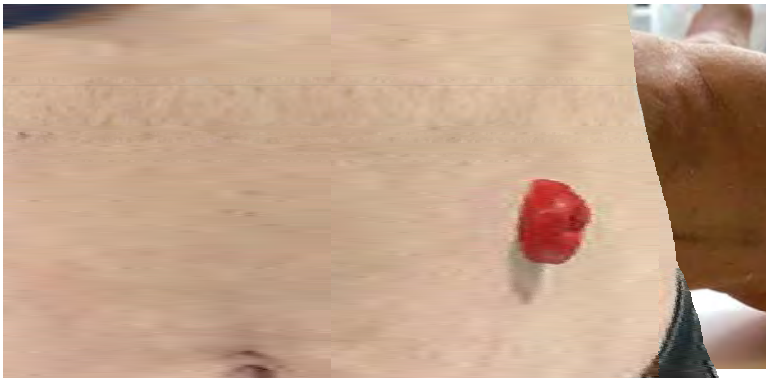
Stage 3



Stage 4



Stoma

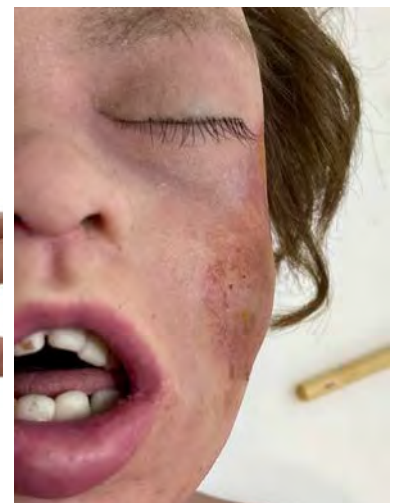
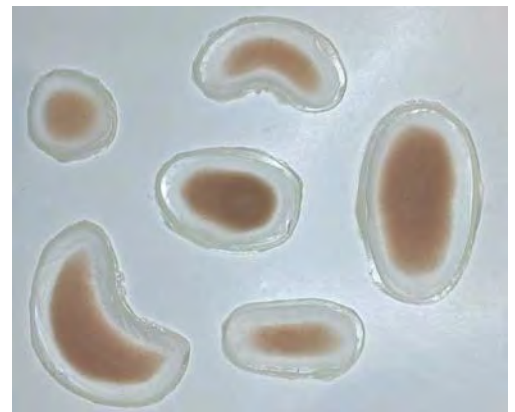


Wound SW39:
Stoma, ready to be used with real collection bags.

6 Multipurpose Swellings

Wound SW31:
6 swellings of differing sizes. Can be used for;

- Small closed fractures
- Burns Blisters
- Goitres
- Joint Swellings
- Facial Swellings



Simology Moulage Training Course

Part Number: SW-TC1

MDT Global Solutions are proud to offer a full day Simology Wound Training Course designed to teach participants the skills of wound application and wound effects.

Full Day Course Syllabus:

- Application of Simology wounds
- Skin tone blending
- Simple skin effects - sweating / pallor etc.
- Blood effects.
- Blood lines
- Bruises
- Burns
- Clean up and removal of all effects.

Courses can be held at the Simology Workshop, at the customer site or on-line. Please contact MDT Global Solutions for more details.

